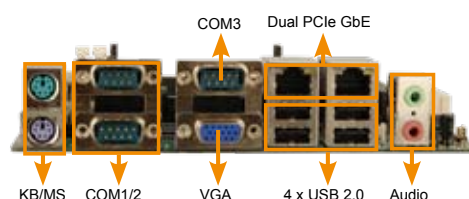
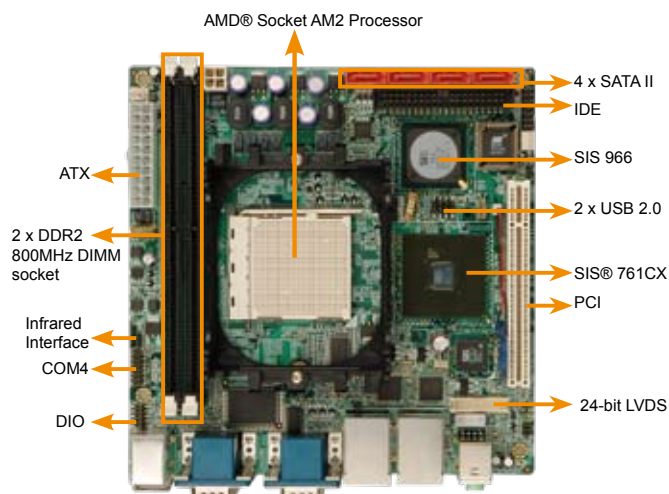


KINO-761AM2

Mini-ITX Motherboard, with AMD Socket AM2 for AMD® Athlon™ 64, AMD® Athlon™ 64 X2 Dual-Core, AMD Sempron™ CPU with VGA/ LVDS, Dual PCIe GbE, USB 2.0, SATA II and Audio



Specifications

- ◆ CPU
AMD® Athlon™ 64, AMD® Athlon™ 64 X2 Dual-Core, AMD® Sempron™ Socket AM2 processor with 2000MHz HyperTransport™ technology support
- ◆ System Chipsets
SIS® 761CX + SIS® 966
- ◆ BIOS
AMI Flash BIOS
- ◆ System Memory
2 x 240-pin dual-channel DDR2 400/533/667/800 MHz up to 4GB
- ◆ Ethernet
Dual Broadcom BCM5787M PCI Express GbE chipset
- ◆ I/O Interface
3 x RS-232
1 x RS-232/422/485
6 x USB 2.0
4 x SATA II with RAID 0, 1, 10 and JBOD
1 x IDE
2 x PS2 for KB/MS
- ◆ Expansion
1 x PCI
- ◆ Digital I/O
8-bit digital I/O, 4-bit input/ 4-bit output
- ◆ Infrared Interface
1 x Infrared interface by pin header
- ◆ Super I/O
W83697HG
- ◆ Display Interface
VGA Integrated in SIS 761CX
24-bit dual-channel LVDS by SiS® 307LV (KINO-761AM2LVDS only)
- ◆ Audio
AC'97 codec with Realtek ALC655
- ◆ Watchdog Timer
Software programmable supports 1 ~255 sec. system reset
- ◆ Power Supply
ATX Power
- ◆ Power Consumption
5V@6.83A, 12V@8.98A, 5Vsb@0.23A
(AMD Athlon™ 64 x 2 5000+ 2.6GHz/1000MHz CPU with 1GB DDR2 667MHz)
- ◆ Temperature
Operating: 0°C ~ 60°C (32°F ~ 140°F)
- ◆ Humidity
Operating: 5% ~95% non-condensing
- ◆ Dimensions
170 mm x 170 mm
- ◆ Weight:
GW: 1100 g / NW: 420 g

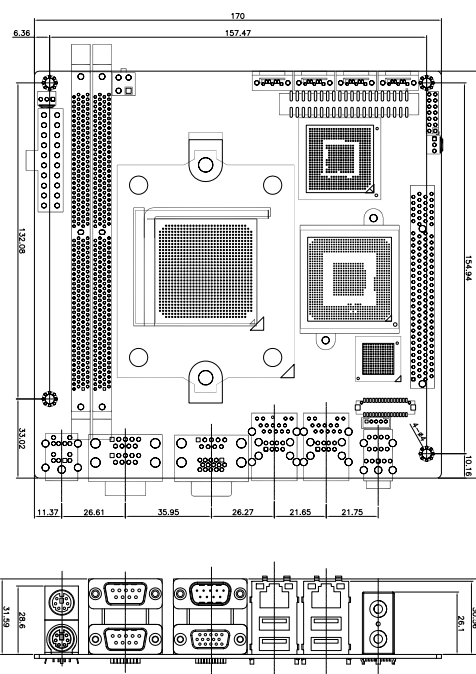
Packing List

1 x KINO-761AM2 single board computer	
1 x Mini jumper pack	
1 x ATA66 flat cable (P/N: 32200-000052-RS)	
2 x SATA cable (P/N: 32000-0628000-RS)	
1 x SATA power cable (P/N: 32100-088600-RS)	
1 x I/O shielding (P/N: 41003-0186C0-00-RS)	
1 x Utility CD	1 x QIG

Features

1. Mini-ITX form factor and RoHS compliant
2. AMD® Athlon™ 64, AMD® Athlon™ 64 X2 Dual-Core, AMD® Sempron™ processor with 2000 MHz HyperTransport™ technology support
3. Support DDR2 800 MHz up to 4GB
4. Support VGA, 24-bit dual-channel LVDS
5. 4 x RS-232, 6 x USB 2.0 and 4 x SATA II RAID

Dimensions (mm)



Ordering Information

Part No.	Description
KINO-761AM2-R10	Mini-ITX motherboard, with AMD® Socket AM2 for AMD® Athlon™ 64, AMD® Athlon™ 64 X2 Dual-Core, AMD® Sempron CPU with VGA, Dual PCIe GbE, USB 2.0, SATA II and audio
KINO-761AM2LVDS-R10	Mini-ITX motherboard, with AMD® Socket AM2 for AMD® Athlon™ 64, AMD® Athlon™ 64 X2 Dual-Core, AMD® Sempron CPU with VGA/LVDS, Dual PCIe GbE, USB 2.0, SATA II and audio
CF-AM2-RS	CPU cooler (89 mm x 69 mm x 30 mm, 46W)
CF-519-RS	CPU cooler (92 mm x 92 mm x 67 mm, 115W)
32200-026500-RS	RS-232/422/485 cable
24105-000029-RS	AMD® Athlon™ 64 x 2 Dual Core 3400+, 1.8GHz; 512KBx2, 1000MHz, FDP35W, Socket AM2(940pins), RoHS
24105-000052-RS	AMD® Athlon™ 64 Single Core 3000+, 1.8GHz; 512KB, 1000MHz, FDP35W, Socket AM2 (940pins), RoHS